

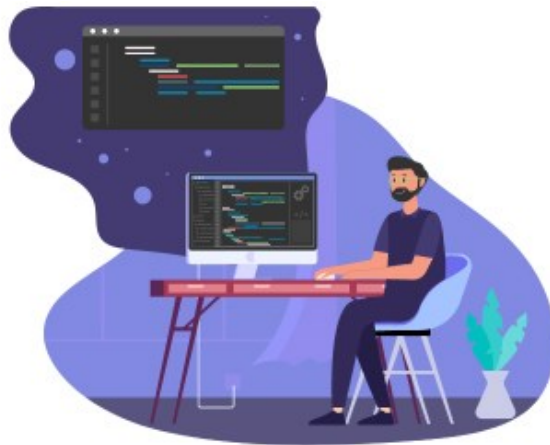


*Online partnership*

Rail bookings within your reach

## *3 ways to sell rail tickets*

### Rail API Gateway



Connect your platform seamlessly with our Rail API Gateway and start selling rail tickets.

**RAIL API GATEWAY**

### Travelshop



Book train tickets for your clients easier than ever before.

**TRAVELSHOP**

### Affiliate



Integrate rail products to your website and get a commission for each conversion.

**AFFILIATE or  
WHITE-LABEL SOLUTION**

## Railway network Europe



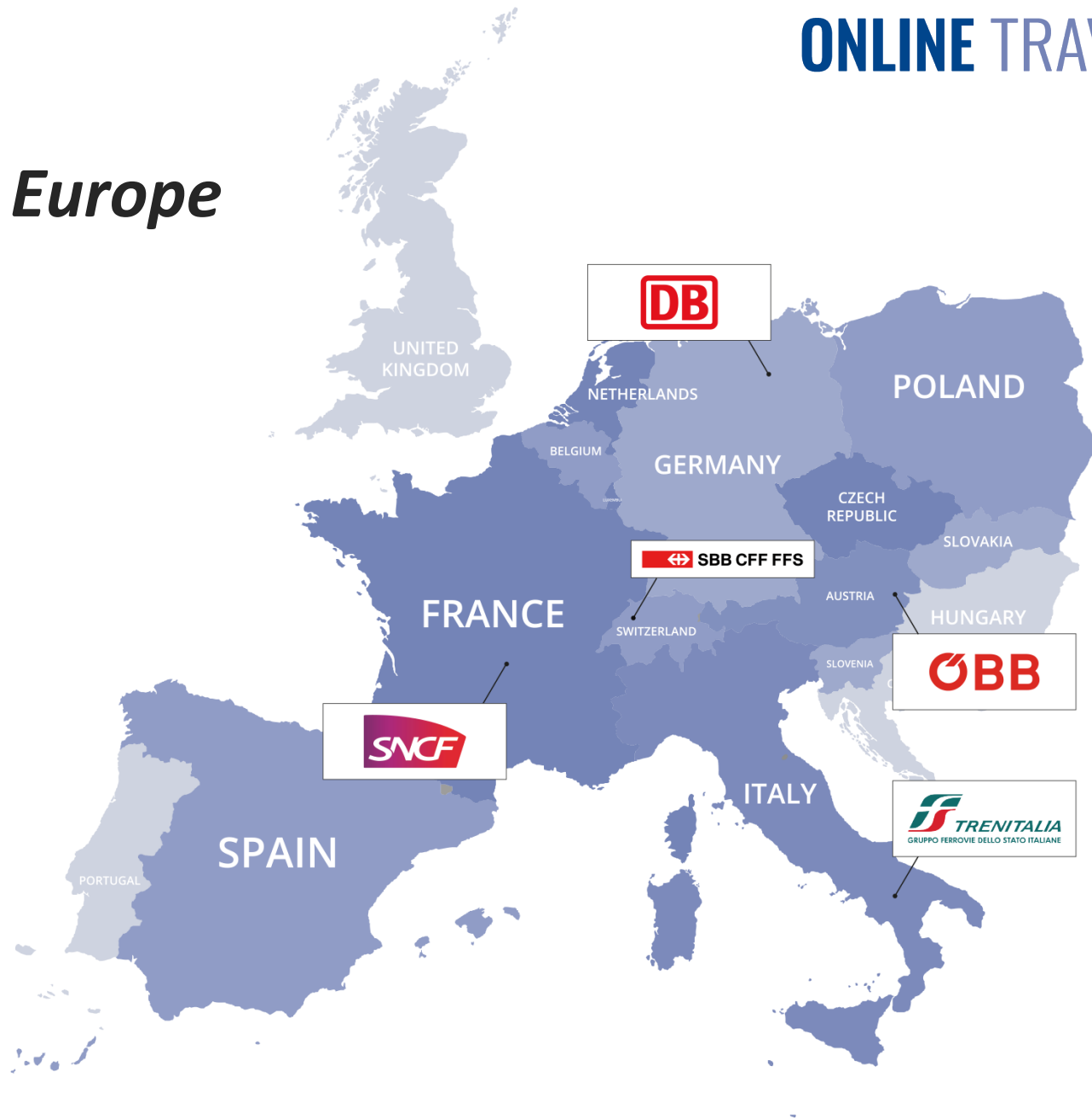
**15**  
Countries



**10'000**  
Railway stations



**21**  
Railway companies



## Interfaces and fares



	SNCF PAO API	Deutsche Bahn PST	Trenitalia PICO	OEBB WebService	SBB Mobility API	Rhaetian Railway RhB-API
RAILWAY COMPANIES	<ul style="list-style-type: none"> <li>• TGV</li> <li>• InterCité</li> <li>• TER</li> <li>• OUIGO International</li> <li>• Eurostar</li> <li>• Thalys</li> <li>• Alleo</li> <li>• Lyria</li> <li>• Elipsos</li> </ul>	Deutsche Bahn incl. European rates from Germany to*  <small>*Belgium, Croatia, Czech Republic, Denmark, Hungary, Luxembourg, Netherland, Poland, Slovakia, Slovenia</small>	<ul style="list-style-type: none"> <li>• Frece</li> <li>• Thello</li> <li>• Trennord</li> <li>• Localtrains</li> <li>• Intercity Notte</li> </ul>	<ul style="list-style-type: none"> <li>• Railjet</li> <li>• Nightjet</li> <li>• euronight</li> <li>• localtrains</li> </ul>	<ul style="list-style-type: none"> <li>• Tilo</li> <li>• Léman-Express</li> <li>• localtrains</li> </ul>	<ul style="list-style-type: none"> <li>• Bernina Express</li> <li>• Glacier Express</li> <li>• Incl. Meals</li> </ul>
FARES	All official fares and tour operator fares	All official fares and tour operator fares	All official fares and tour operator fares	All official fares	All official fares, Swiss Travel Passes	All official fares, seat reservation

## Our partners





## *Cooperation Rail API Gateway*

- » Choose between net prices with a booking fee or gross prices with commission
- » Profit from your own rail contracts or benefit from those of railtour suisse sa.
- » The JSON API is easy to implement and allows access to all connected rail systems via a standardized booking process



# Features Rail API Gateway



## B2B and B2C

We support B2B and B2C integrations.



## Seamless

Rail API Gateway is connected to your existing platform, for a seamless customer experience.



## E-Tickets

E-Tickets are sent instantly after booking.



## JSON API

Our API is built with JSON, we take care of all API updates.



## Options

Rail API Gateway offers availability, booking, pricing and cancellation for rail tickets.



## Access to the partners

Get access to our rail partners or use your own railway contracts.



# *Fulfillment options Rail API Gateway*

## **FULFILLMENT BY PARTNER**

- » Booking based on partner's contracts with rail companies
- » Payment is from partner to the rail company

## **FULFILLMENT BY RAILTOUR SUISSE SA**

- » Booking based on railtour's contracts with the rail companies
- » Payment is from partner to railtour
- » choice between net price-or gross price-model



A mix of both options might be possible;  
e.g. Partner has his own contract with DB, but buys SNCF train tickets through railtour suisse sa





# Rail API Gateway Integration

## STEPS:

- » Signature of a NDA
- » Providing of API description and API evaluation access for 30 days
- » Technical contract for the use of the API
- » Your Commercial contract with the railway or if needed with railtour suisse sa.
- » Access to the API

The screenshot displays the Jeresferie.dk website interface for searching train tickets. At the top, there is a navigation menu with links for 'Rejsemål', 'Tog', 'Togferie', 'Information', and 'Min billet'. The main header features a scenic image of a fjord with the word 'Trains' overlaid. Below the image is a search bar with tabs for 'Pakkerejse inkl. tog og hotel', 'Tog', and 'Hotel'. The search criteria are: 'Enkelt' (Single) or 'Retur' (Return) selected, 'Hamburg, Germany' as the origin, 'Berlin, Germany' as the destination, '06/03/2022 00:00' as the departure time, and '2 Rejsende' (2 passengers). A 'Søg' (Search) button is present. Below the search bar, a progress bar shows 'Vælg tog' (Select train), 'Gennemgå bestilling' (Review booking), and 'Rejseinformation' (Travel information). The 'Filtrer efter' (Filter by) section shows a price range from 359 to 1836 DKK. The 'Afrejser' (Trains) section displays a result: Departure from Hamburg at 05:52 on 06-03-2022, arrival at Berlin Main Station at 07:55 on 06-03-2022, with a price of DKK 1568,25 per person for 2nd class. A 'Vælg' (Select) button is available for this option.

# Our product portfolio for the Travelshop and Affiliates

## Hotel

Hotel Supplier  
Hotels worldwide

## Rail

SNCF, Trenitalia, ÖBB, DB, SBB,  
RhB (Bernina Express, Glacier Express)

## Activities

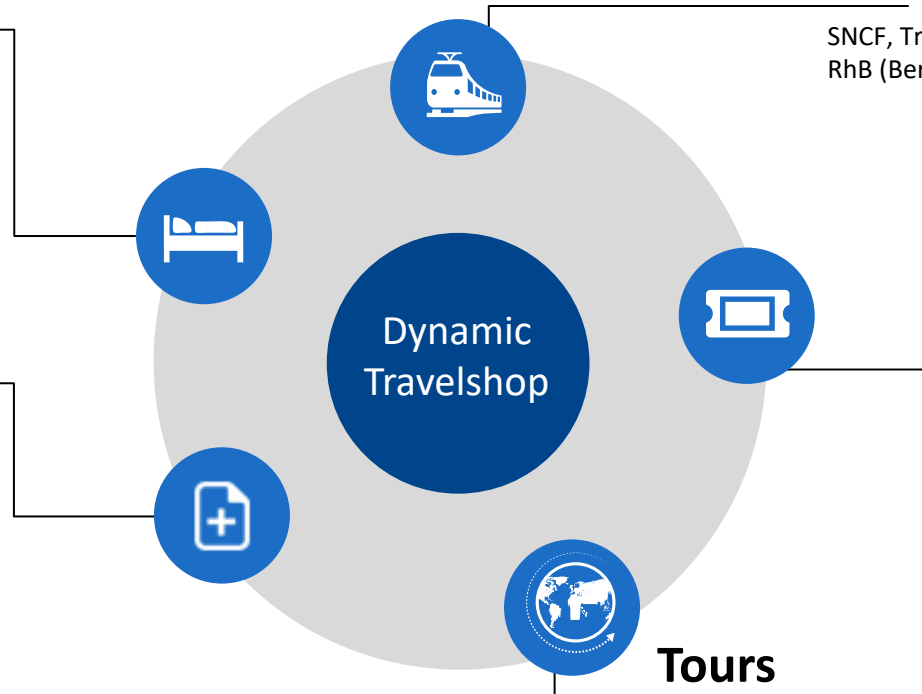
e.g. metro ticket, city tour,  
private tour, cooking class, ...

## Rail Passes

Swiss Travel Pass

## Tours

With one click you book a tour with several hotels, activities and rail. The customer can then change the single services individually





## *Cooperation Travelshop*

- » The shopping basket allows users to easily book individual services or create a customized itinerary
- » services: Train, accommodation, activities, packages
- » all rates are dynamic
- » offers can be sent to the clients directly from the Travelshop
- » Payment methods: credit card or invoice and deposit or bank guarantee
- » all prices are gross; commissions based on volume



# Features Travelshop



## Basket system

Add accommodation and activities to your train tickets and create your own packages.



## Multiple users

Multiple users can access and place bookings simultaneously.



## Documents by e-mail

All travel documents are sent as PDF by e-mail.



## Branding

Put your own logo on travel documents.



## Credit card accepted

Benefit from our secure payment gateway – pay in EUR, CHF, USD.



## Get a commission

Get a competitive commission on every booking.



## *Cooperation Affiliate*

- » Integration of our booking engine into your website
- » White label version possible (logo and colours can be chosen)
- » Complete sales process handled by railtour
- » Payment methods: Master Card, Visa
- » Joint promotions to be discussed
- » Commission to be defined



# Features Affiliate



## White label

No need to code anything, you get access to our interface with your branding.



## Hosting by us

Hosting and complete sales process handled by us.



## Get a commission

Drive traffic to your website and get a commission for each conversion.



## Credit card accepted

Benefit from our secure payment gateway – pay with EUR, CHF, USD.



## Multiple languages

We support DE, IT, FR and EN – additional languages possible if desired.



## Fast go-live

Get your Affiliate live within one week after signing the contract.

# Duration of the integrations



Estimated time frame

Affiliate railtour

1 Week



Travelshop login

1 Week



Affiliate white label

2 Weeks



Rail-API-Gateway

up to 6 months



# *Convince yourself*

Testlink Travelshop

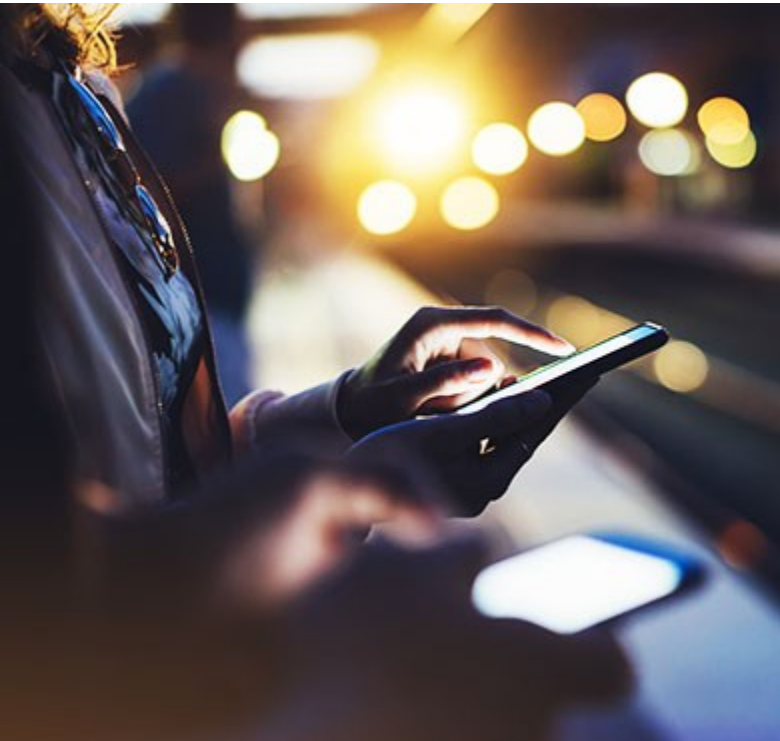




## *Online Travel – Company profile*



MADE IN  
SWITZERLAND



<b>Business areas</b>	IT solutions, software development and software products for the travel industry. Proven experienced provider of rail interface connections.
<b>Legal form</b>	Limited company
<b>Founded</b>	in 1992
<b>Team</b>	15 employees in Koblenz, Switzerland
<b>More about us</b>	<a href="http://www.onlinetravel.ch">www.onlinetravel.ch</a>



**ONLINE TRAVEL**  

---

*we create rail solutions*

**Online Travel Information Services AG**

**Markus Hertig**

+41 (0)31 378 01 17

[hertig@onlinetravel.ch](mailto:hertig@onlinetravel.ch)

**Julika Aus der Au**

+41 (0)56 267 57 08

[ausderau@onlinetravel.ch](mailto:ausderau@onlinetravel.ch)