



*Online partnership*

Global leader in train technology

## *3 ways to sell rail tickets*

### Railhub API



Connect your platform seamlessly with our Railhub and start selling rail tickets.

RAIL API

### Travelshop



Book train tickets for your clients easier than ever before.

TRAVELSHOP

### Affiliate



Integrate rail products to your website and get a commission for each conversion.

AFFILIATE or  
WHITE-LABEL SOLUTION

## Our product portfolio

### Hotel

#### Hotelsuppliers

More than 200'000 hotels worldwide

#### Hotels «Select»

2'000 own contracted hotels

### Railpasses

Swiss Travel Pass

### Rail

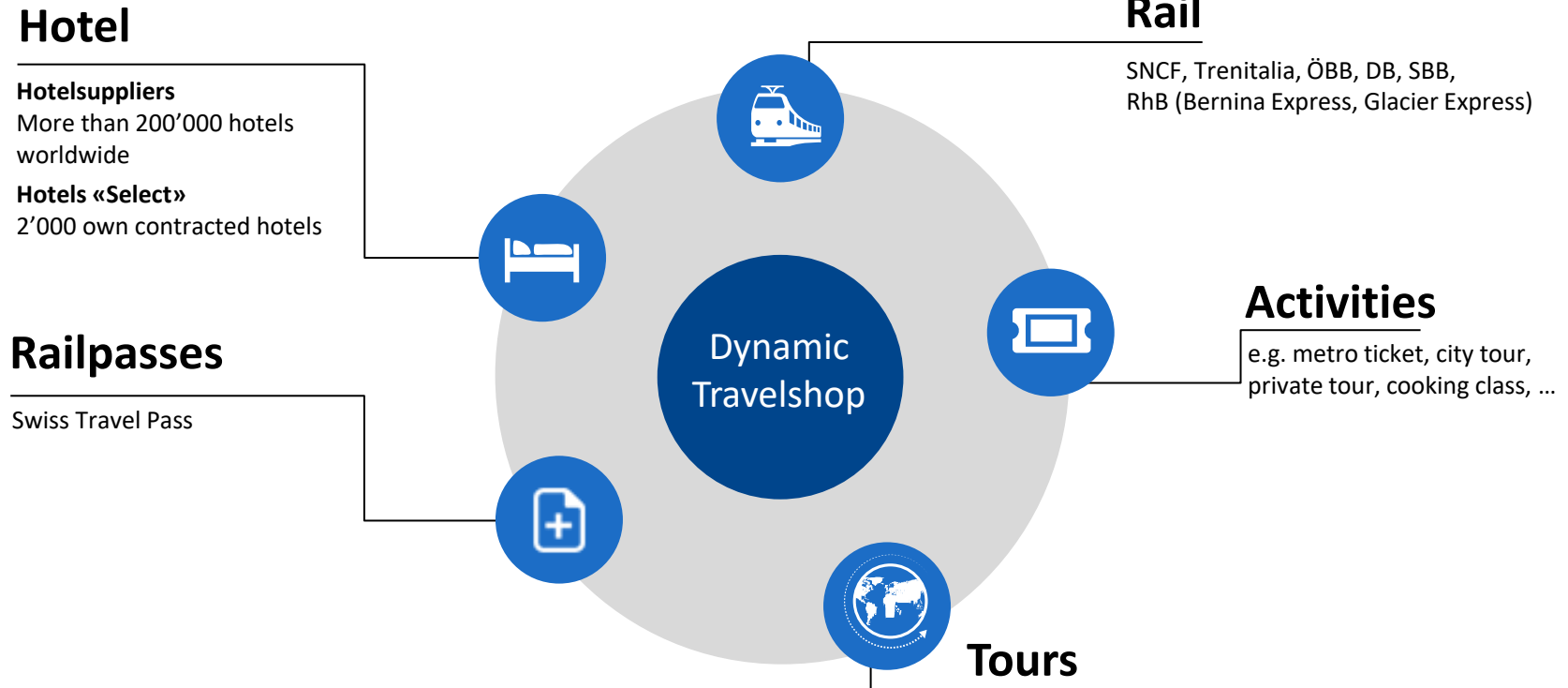
SNCF, Trenitalia, ÖBB, DB, SBB, RhB (Bernina Express, Glacier Express)

### Activities

e.g. metro ticket, city tour, private tour, cooking class, ...

### Tours

With one click you book a tour with several hotels, activities and transportation. The customer can then change the single services individually



## *Railway network Europe*



**15**  
Countries



**10'000**  
Railway stations



**21**  
Railway companies



## Interfaces and fares



	SNCF PAO API	Deutsche Bahn WSD / PST	Trenitalia PICO	OEBB WebService	SBB WebService	Rhaetian Railway RhB-API
RAILWAY COMPANIES	<ul style="list-style-type: none"> <li>• TGV</li> <li>• InterCité</li> <li>• TER</li> <li>• OUIGO International</li> <li>• Eurostar</li> <li>• Thalys</li> <li>• Alleo</li> <li>• Lyria</li> <li>• Elipsos</li> </ul>	Deutsche Bahn incl. European rates from Germany to*  <small>*Belgium, Croatia, Czech Republic, Denmark, Hungary, Luxembourg, Netherland, Poland, Slovakia, Slovenia, Sweden</small>	<ul style="list-style-type: none"> <li>• Frece</li> <li>• Thello</li> <li>• Trennord</li> <li>• Localtrains</li> <li>• Intercity Notte</li> </ul>	<ul style="list-style-type: none"> <li>• Railjet</li> <li>• Nightjet</li> <li>• euronight</li> <li>• localtrains</li> </ul>	<ul style="list-style-type: none"> <li>• Tilo</li> <li>• Léman-Express</li> <li>• localtrains</li> </ul>	<ul style="list-style-type: none"> <li>• Bernina Express</li> <li>• Glacier Express</li> <li>• Incl. Meals</li> </ul>
FARES	All official fares and tour operator fares	All official fares and tour operator fares	All official fares and tour operator fares	All official fares and tour operator fares	All official fares, Swiss Travel Passes	All official fares, seat reservation

## Our partners



 SBB CFF FFS



hotelbeds



FRANTOUR



GET YOUR GUIDE



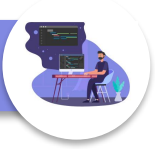
FRANTOUR



datatrans.

ingenico GROUP





## *Cooperation API-Railhub*

- » Direct connection to our Railhub
- » The JSON API is easy to implement and allows access to all connected rail systems via a standardized booking process



# Features Railhub API



## B2B and B2C

We support B2B and B2C integrations.



## Seamless

Railhub API is connected to your existing platform, for a seamless customer experience.



## E-Tickets

E-Tickets are sent instantly after booking.



## JSON API

Our API is built with JSON, we take care of all API updates.



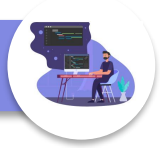
## Options

Railhub API offers availability, booking, pricing and cancellation for rail tickets.



## Access to our partners

Get access to our five rail partners, or use your existing contracts.



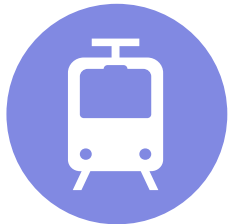
## *Fulfillment options API-Railhub*

### **FULFILLMENT BY RAILTOUR**

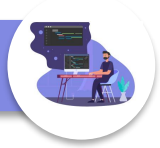
- » Booking based on railtour own contract with rail companies
- » All payments done by partner to railtour
- » Fulfillment by railtour
- » e-tickets are sent from railtour to partner

### **FULFILLMENT BY PARTNER**

- » Booking based on partner contract with rail companies
- » All payments done by partner to the rail company
- » e-tickets are sent directly to partner



A mix of both options might be possible; e.g. Partner has his own contract with DB, but buys SNCF train tickets through railtour



# API-Railhub Integration

## STEPS:

- » Signature of an NDA
- » Providing of API description
- » Technical contract for the use of the API
- » Commercial contract with railtour or with the railway companies
- » Access to the API

The screenshot displays the Jeresferie.dk website interface for searching train packages. The search criteria are as follows:

- Origin:** Hamburg, Germany
- Destination:** Berlin, Germany
- Departure Date/Time:** 06/03/2022 00:00
- Passengers:** 2 Rejsende

The search results section, titled "Afrejser", shows the following details for the selected train:

- Departure:** 05:52 from Hamburg
- Arrival:** 07:55 at Berlin Main Station
- Price:** DKK 1568,25 (Pr. person: DKK 784,13)
- Class:** 2. Klasse



## *Cooperation Travelshop*

- » The shopping basket allows users to easily book individual services or create a customized itinerary
- » services: Train, accommodation, activities, packages
- » all rates are dynamic
- » offers can be sent to the clients directly from the Travelshop
- » Payment methods: credit card or invoice and deposit or bank guarantee
- » all prices are gross; commissions based on volume



# Features Travelshop



## Basket system

Add accommodation and activities to your train tickets and create your own packages.



## Multiple users

Multiple users can access and place bookings simultaneously.



## Documents by e-mail

All travel documents are sent as PDF by e-mail.



## Branding

Put your own logo on travel documents.



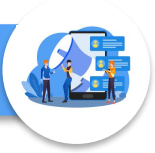
## Credit card accepted

Benefit from our secure payment gateway – pay in EUR, CHF, USD.



## Get a commission

Get a competitive commission on every booking.



## *Cooperation Affiliate*

- » Integration of our booking engine into your website
- » White Label version possible
- » Complete sales process handled by raitour
- » Payment methods: Master Card, Visa
- » Joint promotions to be discussed
- » Commission to be defined



# Features Affiliate



## Whitelabel

No need to code anything, you get access to our interface with your branding.



## Hosting by us

Hosting and complete sales process handled by us.



## Get a commission

Drive traffic to your website and get a commission for each conversion.



## Credit card accepted

Benefit from our secure payment gateway – pay with EUR, CHF, USD.



## Multiple languages

We support DE, IT, FR and EN – additional languages possible if desired.



## Fast go-live

Get your Affiliate live within one week after signing the contract.

## Duration of the integrations



Estimated timeframe

Affiliate railtour

1 week



Travelshop login

1 week



Affiliate whitelabel

2 weeks



API

up to 6 months





***Convince yourself***

**Testlink Travelshop**



## *Online Travel – Company profile*



<b>Business areas</b>	IT solutions, software development and online services for the travel industry. Proven experienced provider of rail interface connections.
<b>Legal form</b>	Limited company
<b>Founded</b>	in 1992
<b>Team</b>	15 employees in Koblenz, Switzerland
<b>More about us</b>	<a href="http://www.onlinetravel.ch">www.onlinetravel.ch</a>



**ONLINE TRAVEL**  

---

*we create rail solutions*

**Online Travel Information Services AG**

**Lisa Michel**

+41 (0)31 378 02 78

[michel@onlinetravel.ch](mailto:michel@onlinetravel.ch)

**Enia Ruffener**

+41 (0)31 378 01 44

[ruffener@onlinetravel.ch](mailto:ruffener@onlinetravel.ch)